

EBV (HHV-4) gH/gp42 protein complex

CATALOG NUMBER: HHV4-gH42-12P

Introduction

Herpesviruses have an envelope and an outer lipid bilayer which contains twelve surface glycoproteins. For infectivity to be attained, the double stranded DNA genome of EBV must enter the host cell through means of fusion of its envelope with the cellular membrane or via endocytosis.

Epstein-Barr virus (EBV) can infect both B cells and epithelial cells. The mechanisms for entering these two cells are different. The viral three-part glycoprotein complexes of gH/gL/gp42 mediate B cell membrane fusion.

Description

Recombinant EBV glycoprotein H and gp42 proteins expressed and purified from 293 cells

Viral Protein

Recombinant EBV gH protein (amino acid 19-678) (GenBank accession#:P03231) and EBV gp42 (aa 34-223) (GenBank accession#: YP_401672) complex

Applications

Western blot standard, antibody ELISA, immunogen, etc.

Storage

Store at -20 °C; Stable for two weeks from the date of shipment when kept at 4 °C. Non-hazardous. No MSDS required.

Concentration

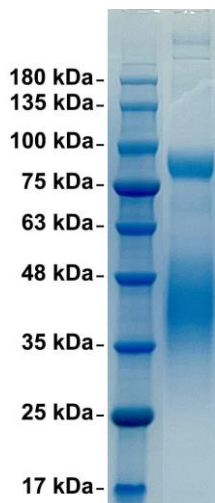
50 µg (1 µg/µl) in PBS

Endotoxin Level

<0.01 EU per 1 µg of the protein by LAL test

Purity

> 95% pure by 10% SDS-PAGE gel



4-20% SDS-PAGE: purified gH/gp42(EBV) protein complex

EBV glycoprotein H and gp42 SEQ:

SLSEVKLHLHDIEGHASHYTIIPWTELMAKVPGLSPEALWREANVTEDLASMLNRYKLIYKTSGLTGLIALAEPVDIPAVSEGSMQVDASKVHPGV
ISGLNSPACMLSAPLEKQLFYIIGTMLPNTRPHSYVFYQLRCHLSYVALSINGDKFYTGAMTSKFLMGTYKRVTEKGDEHVLSLVFGKTKDL
PDLRGPFSYPSLTSAQSGDYSLVIVTTFVHYANFHNYFVFNPKDMFSRAVTMTAASYARYVLQKLVLLEMKGGCREPELDTETLTTMFEVSV
FFKVGHAVGETGNGCVDLRWLAKSFFELTVLKDIIGICYGATVKGMQSYGLERLAAMLMTATVKMEELGHLLTTEKQYALRLATVGYPKAGVYS
GLIGGATSVLLSAYNRHPLFQPLHTVMRETLFIGSHVVLRELRLNVTQGGPNLALYQLLSTALCSALEIGEVLRLGLALGTESGLFSPCYLSLR
FDLTRDKLLSMAPQEATLDQAAVSNVAVDGFGLGRSLEREDRDAWHLPAYKCVDRDLKVLMIIPLINVTFIISSDREVRSALYEASTTYLSS
LFLSPVIMNKCSQGAVAGEPRQIPKIQNFTRTQKSCIFCGFALLSYDEKEGLETTYITSQEVQNSILSSNYFDFDNLHVHYLLLTNGTVME
IAGLYEERA

GGRVAAAAITWVPKPNVEVWPVDPVPPVFNKTAEQEYGDKEVKLPHWPTLHTFQVPQNYTKANCTYCNTREYTFYSYKCCFYFTKKKHTWN
GCFQACAELYPCYFYGPTPDILPVVTRNLNAIESLWVGVYRVGEGNWTSLDGGTFKVYQIFGSHCTYVSKFSTVPVSHHECSFLKPCLCVSO
RSNS