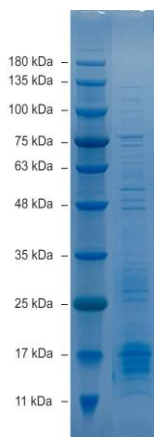


## Recombinant E7 Protein of Human Papillomavirus (HPV) 16

CATALOG NUMBER: HPV16-E7-60P

<b>Introduction</b>	The human papillomavirus (HPV) is a non-enveloped, double-stranded, circular DNA (7-8 kb) virus that is responsible for causing multiple epithelial lesions and cancers. Papillomavirus genome is divided into an early region (E), encoding eight functional early (E-E8) that are expressed immediately after initial infection of a host cell, and a late region (L) encoding a major capsid protein L1 and a minor capsid protein L2. Papillomaviruses are non-enveloped, and its outer shell is mainly composed by capsid protein L1.
<b>Applications</b>	Western blot standard, antibody ELISA, antigen, etc.
<b>Description</b>	Recombinant protein expressed and purified from <i>E.coli</i>
<b>Viral Protein</b>	C-terminal his-tagged full-length E7 recombinant protein of human papillomavirus 16 (GenBank accession#: AAA46940)
<b>Storage</b>	Store at -20 °C; Stable for 3-months from the date of shipment when kept at 4 °C.
<b>Concentration</b>	50 µg ( 1 µg/µl) in PBS pH7.4
<b>Endotoxin Level</b>	<0.01 EU per 1 µg of the protein by LAL test
<b>Specificity</b>	≥ 80% purity



**SDS-PAGE (4-20%):** purified recombinant E7 protein of HPV 16

### Recombinant E7 protein (HPV 16) SEQ:

MHGDTPTLHEYMLDLQPETTDLYCYEQLNDSSEEEDEIDGPAGQAEPPDRAHYNIIVTFCKCDSTLRLCVQSTHVDIRLTLEDLLMGTL  
GIVCPICSQKP **HHHHHH**

