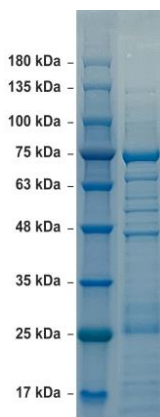


Recombinant L1 Protein of Human Papillomavirus (HPV) 16

CATALOG NUMBER: HPV16-L1-16P

Introduction	The human papillomavirus (HPV) is a non-enveloped, double-stranded, circular DNA (7-8 kb) virus that is responsible for causing multiple epithelial lesions and cancers. Papillomavirus genome is divided into an early region (E), encoding eight open reading frames (ORF) (E-E8) that are expressed immediately after initial infection of a host cell, and a late region (L) encoding a major capsid protein L1 and a minor capsid protein L2. Papillomaviruses are non-enveloped, and its outer shell is mainly composed by capsid protein L1.
Applications	Western blot standard, antibody ELISA, antigen, etc.
Description	Recombinant protein expressed and purified from 293 cells
Viral Protein	C-terminal his-tagged full-length L1 recombinant protein of human papillomavirus 16 (GenBank accession#: P03101)
Storage	Store at -20 °C; Stable for 3-months from the date of shipment when kept at 4 °C.
Concentration	50 µg (1 µg/µl) in PBS pH7.4
Endotoxin Level	<0.01 EU per 1 µg of the protein by LAL test
Specificity	≥ 90% purity



SDS-PAGE: purified recombinant L1 protein of HPV 16

Recombinant L1 protein (HPV 16) SEQ:

MSLWLPSSEATVYLPVPVPSKVSTDEYVARTNIYYHAGTSRLLAVGHYPYFPIKKPNNKILVPKVSGLQYRVFRIHLDPNKFQFPD
 TSFYNPDTQRLVWACVGEVGRGQPLGVGISGHPLLNKLDDENASAYAANAGVDNRECI SMDYKQTQLCLIGCKPPIGEHWGKGS
 CTNVAVNPGDCPPLELINTVIQDGMVDTGFGAMDFTTLQANKSEVPLDICTSICKYPDYIKMVSEPYGDSLFFYLRRQMFVRHLF
 NRAGAVGENVPDDLYIKGSGSTANLASSNYFPTPSGSMVTSDAQIFNKPYWLQRAQGHNNGICWGNQLFVTVVDTTRSTNMSLCAAI
 STSETTYKNTNFKEYLRHGEEYDLQFIFQLCKITLTADVMTYIHSMNSTILEDWNFGLQPPPGGTLEDTYRFVTSQAIAACQKHTPPA
 PKEDPLKKYTFWEVN LKEKFSADLDQFPLGRKFLQAGLKAKPKFTLGKRKATPTTSSTSTTAKRKRKRL **HHHHHH**

