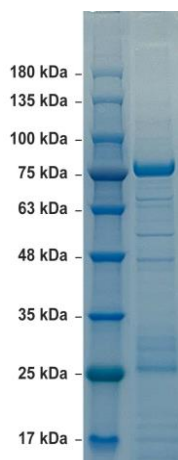


## Recombinant L1 Protein of Human Papillomavirus (HPV) 18

CATALOG NUMBER: HPV18-L1-18P

<b>Introduction</b>	The human papillomavirus (HPV) is a non-enveloped, double-stranded, circular DNA (7-8 kb) virus that is responsible for causing multiple epithelial lesions and cancers. Papillomavirus genome is divided into an early region (E), encoding eight open reading frames (ORF) (E-E8) that are expressed immediately after initial infection of a host cell, and a late region (L) encoding a major capsid protein L1 and a minor capsid protein L2. Papillomaviruses are non-enveloped, and its outer shell is mainly composed by capsid protein L1.
<b>Applications</b>	Western blot standard, antibody ELISA, antigen, etc.
<b>Description</b>	Recombinant protein expressed and purified from 293 cells
<b>Viral Protein</b>	C-terminal his-tagged full-length L1 recombinant protein of human papillomavirus 18 (GenBank accession#: P06794)
<b>Storage</b>	Store at -20 °C; Stable for 3-months from the date of shipment when kept at 4 °C.
<b>Concentration</b>	50 µg ( 1 µg/µl) in PBS pH7.4
<b>Endotoxin Level</b>	<0.01 EU per 1 µg of the protein by LAL test
<b>Specificity</b>	≥ 90% purity



**SDS-PAGE:** purified recombinant L1 protein of HPV 18

### Recombinant L1 protein (HPV 18) SEQ:

MALWRPSDNTVYLLPPPSVARVVNTDDYVTPTSIFYHAGSSRLLTVGNPYFRVPAGGGNKQDIPKVSAYQYRVFRVQLPDPNKFGLPD  
 TSIYNPETQRLVWACAGVEIGRGQPLGVLGSGHPFYNKLDDESSHAATSNVSEEDVRDNDVSDYKQTQLCILGCAPAI GEHWAKGTA  
 CKSRPLSQGDCPPLELKNVLEDDGDMVDTGYGAMDFSTLQDTKCEVPLDICQSICKYPDYLQMSADPYGDSMFFCLRREQLFARHFW  
 NRAGTMGDTVPQSLYIKGTGMPASPGSCVYSPSPSGSIVTSDSQLFNKPYWLHKAQGHNNGVCWHNQLFVTVVDTPSTNLTI  
 CAST QSPVPGQYDATKFKQYSRHEEYDLQFIFQLCTITLTADVMSYIHSMNSSILEDWNFVPPPTTSLVDTYRFVQSVAITCQKDAAP  
 AENKDPYDKLKFVNVDLKEKFSLLDQYPLGRKFLVQAGLRKPTIGPRKRSAPSATSSKPAKRVRVRARKHHHHHH