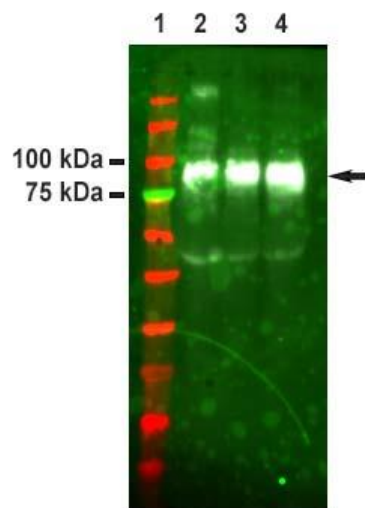


## Anti-Spike (SARS-CoV-2) Rabbit Polyclonal Antibody

CATALOG NUMBER: SCV2-S-300, 100 µg

<b>Introduction</b>	Severe acute respiratory syndrome coronavirus 2 (SARS-CoV-2) is the virus that causes COVID-19 (coronavirus disease 2019), the respiratory illness responsible for the COVID-19 pandemic. Many SARS-CoV-2 variants have been identified throughout the world since its outbreak in late 2019; some of more particular importance due to their potential for increased transmissibility, increased virulence, and reduced effectiveness of vaccines against them.  The genome of SARS-CoV-2 has 89% nucleotide identity with bat SARS-like-CoVZXC21 and 82% with that of human SARS-CoV. The phylogenetic trees of their orf1a/b, Spike, Envelope, Membrane and Nucleoprotein also clustered closely with those of the bat, civet and human SARS coronaviruses. However, the external subdomain of Spike's receptor binding domain (RBD) of SARS-CoV-2 shares only 40% amino acid identity with other SARS-related coronaviruses.
<b>Description</b>	Rabbit polyclonal anti-spike (SARS-CoV-2) antibody
<b>Immunogen</b>	Genetic immunization with full length spike cDNA and then boosted once with spike protein of SARS-CoV-2
<b>Applications</b>	Western blot (1:400-1:2000), ELISA (1:40,000), Neutralization Assay, and other applications.
<b>Purification</b>	Protein G immunoaffinity chromatography
<b>Concentration</b>	2 µg/µl in PBS
<b>Storage</b>	Store at -20 °C; Stable for 6 months from the date of shipment when kept at 4 °C. Non-hazardous.
<b>Specificity</b>	Reacts with spike protein of all SARS-CoV-2 variants tested, including Alpha (B.1.1.7 lineage), Beta variant (B.1.351 lineage), Delta variant (B.1.617.2 lineage), Omicron variant (B.1.1.529 lineage), BA.2 subvariant, XBB1.5 variant, and JN.1 variant.



**WB**, 1, protein marker; 2, Pseudoviral particles (614D); 3, pseudoviral particle (XBB1.5 subtype); 4, pseudoviral particle (JN.1 subtype). Primary antibody (1:400), Peroxidase conjugated goat anti-rabbit secondary antibody (1:4000).